

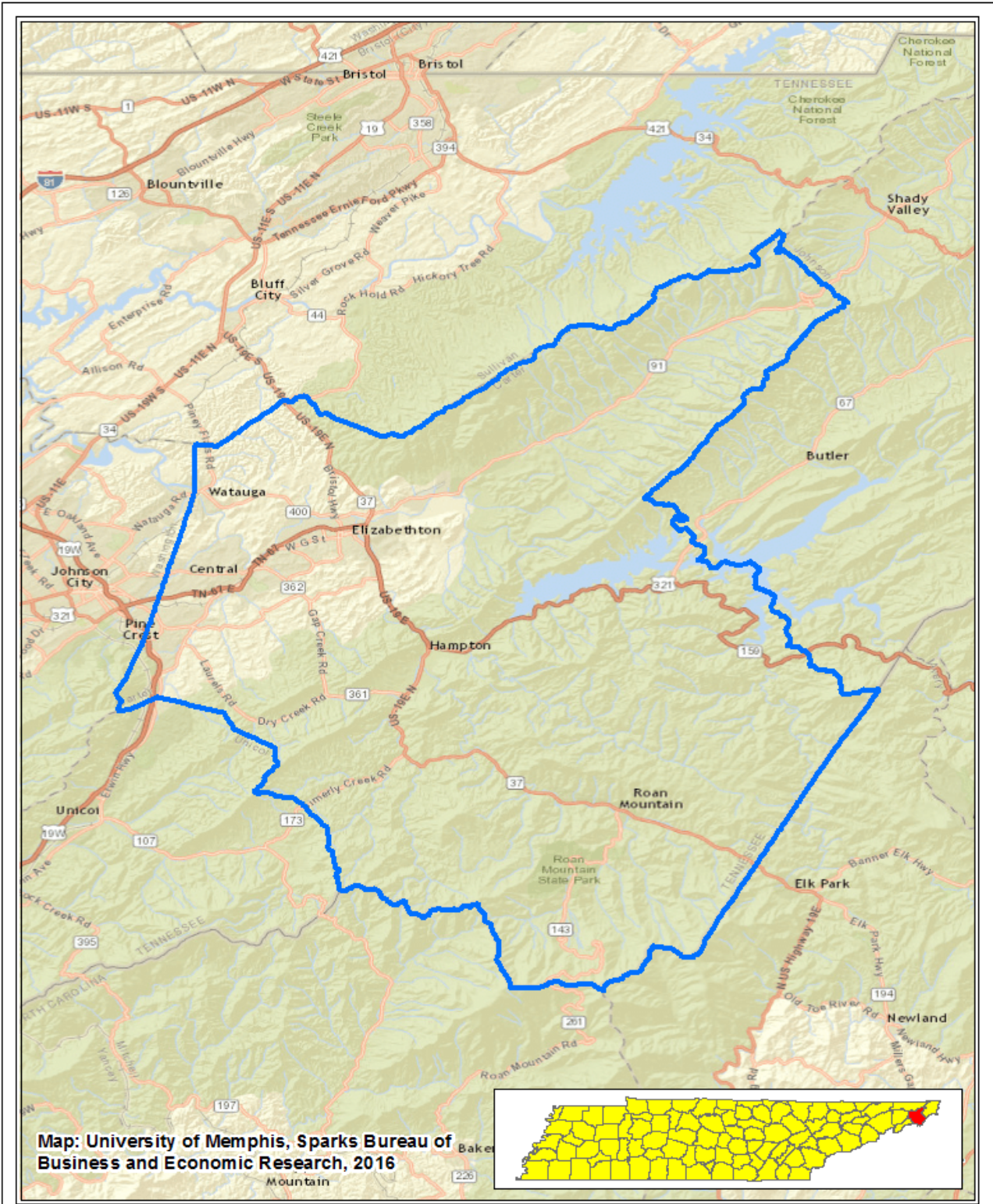
Estimates of the Economic Impact of Workforce Innovation and Opportunity
Act Partner Program Expenditures
in Carter County July 1, 2014 to June 30, 2015.

Prepared for:

Tennessee Department of Labor and Workforce Development

Prepared by:

The Sparks Bureau of Business and Economic Research/Center for Manpower Studies
The University of Memphis



Map: University of Memphis, Sparks Bureau of Business and Economic Research, 2016

Carter County

 County

The Economic Impact of Workforce Innovation and Opportunity Act Partner Program Expenditures in Carter County: Fiscal Year 2014-2015

During the 2014-2015 fiscal year, Tennessee’s Workforce Innovation and Opportunity Act (WIOA) partner programs expended a combined estimated \$881,385 in Carter County. As shown in Table 1, these expenditures resulted in the total production of goods and services (output) valued at about \$1.2 million.

Table 1. Output Impact of Carter County WIOA Expenditures, 2014-2015

Direct Impact	\$881,385
Indirect Impact	\$57,483
Induced Impact	\$257,439
Total Impact	\$1,196,307

Note: Numbers may not add due to rounding differences.

As presented in Table 2, WIOA expenditures in Carter County resulted in a cumulative employment impact on 25 jobs with a corresponding labor income impact of \$738,436. Employment accounts for both full- and part-time workers supported by the expenditures and is measured in annual average jobs. This number includes employees of the WIOA partner programs as well as employees of the business and organizations that supply goods and services to the WIOA partners.

Table 2. Employment and Labor Income Impact of Carter County WIOA Expenditures, 2014-2015

	Employment	Labor Income
Direct Impact	22.4	\$654,022
Indirect Impact	0.6	\$16,557
Induced Impact	2.4	\$67,858
Total Impact	25.4	\$738,436

Note: Numbers may not add due to rounding differences.

The economic impact of WIOA expenditures extends throughout Carter County’s economy. The Top Ten Industry sectors directly and indirectly affected by WIOA expenditures are shown in Table 3.

Table 3. Top Ten Industries Affected by WIOA Expenditures in Carter County Ranked by Employment, 2014-2015

Description	Employment	Labor Income	Output
Employment services	22.4	\$654,726	\$882,333
Food services and drinking places	0.5	\$7,719	\$24,536
Private household operations	0.3	\$322	\$325
Nursing and residential care facilities	0.2	\$6,143	\$10,355
Accounting, tax preparation, bookkeeping, and payroll services	0.1	\$1,366	\$8,559
Offices of physicians, dentists, and other health practitioners	0.1	\$7,345	\$13,465
Retail Stores - General merchandise	0.1	\$3,278	\$6,861
Services to buildings and dwellings	0.1	\$1,962	\$5,508
Retail Stores - Motor vehicle and parts	0.1	\$4,324	\$8,530
Retail Stores - Miscellaneous	0.1	\$1,025	\$3,057

WIOA partner program expenditures in Carter County also resulted in an increase in local, state, and federal tax revenues of \$138,945. Table 4 presents the state and local tax estimates.

Table 4. Carter County WIOA Tax Impact, 2014-2015

	Total
Dividends	\$32
Social Ins Tax- Employee Contribution	\$348
Social Ins Tax- Employer Contribution	\$685
Indirect Bus Tax: Sales Tax	\$15,246
Indirect Bus Tax: Property Tax	\$6,642
Indirect Bus Tax: Motor Vehicle License	\$228
Indirect Bus Tax: Severance Tax	\$13
Indirect Bus Tax: Other Taxes	\$1,614
Indirect Bus Tax: S/L Non Taxes	\$161
Corporate Profits Tax	\$1,048
Personal Tax: Income Tax	\$413
Personal Tax: Non Taxes (Fines- Fees)	\$2,460
Personal Tax: Motor Vehicle License	\$601
Personal Tax: Property Taxes	\$165
Personal Tax: Other Tax (Fishing, Hunting licenses)	\$257
Total State and Local Tax	\$29,915